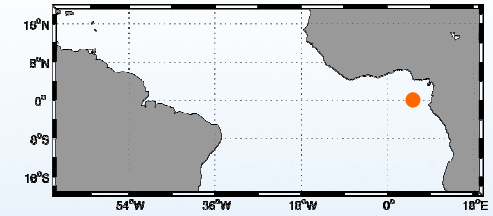


Measurements at São Tomé

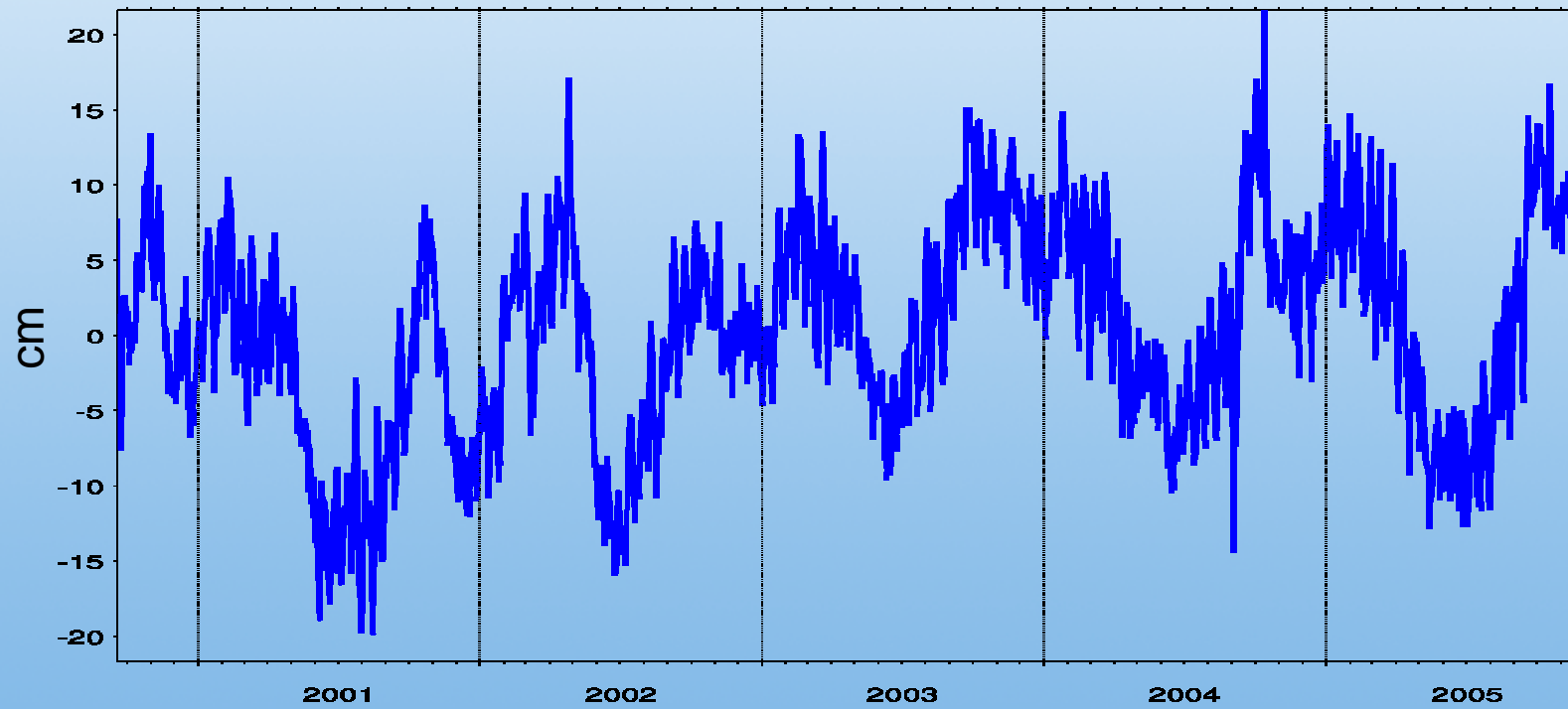
Guillaume CHARRIA, Frédéric MARIN, Yves DU PENHOAT,
Bernard BOURLÈS, Laurent TESTUT, Nelly ROUSSEAU,
Philippe TÉCHINÉ, and Laurent ROBLOU



Tide Gauge



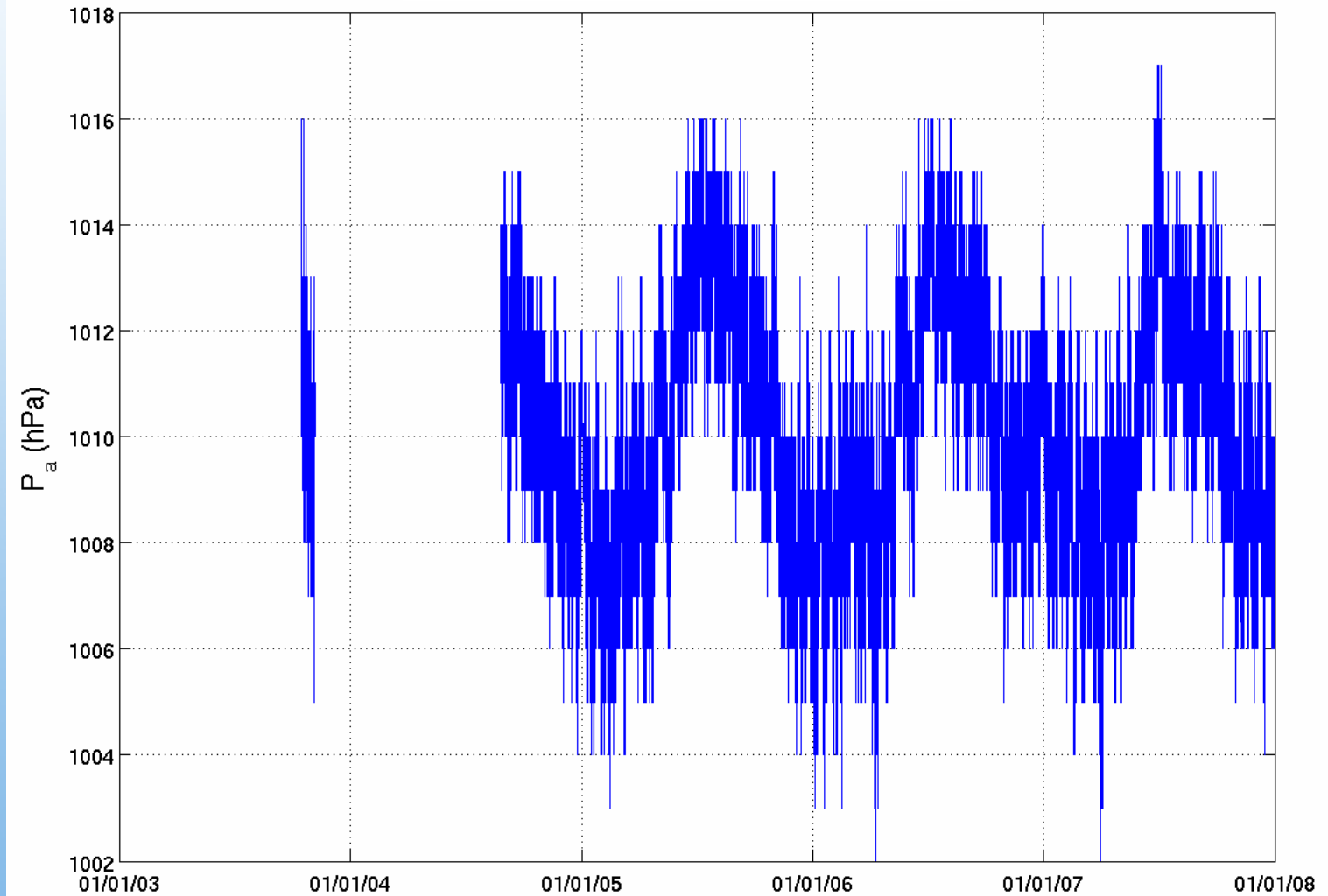
Filtered sea level anomalies



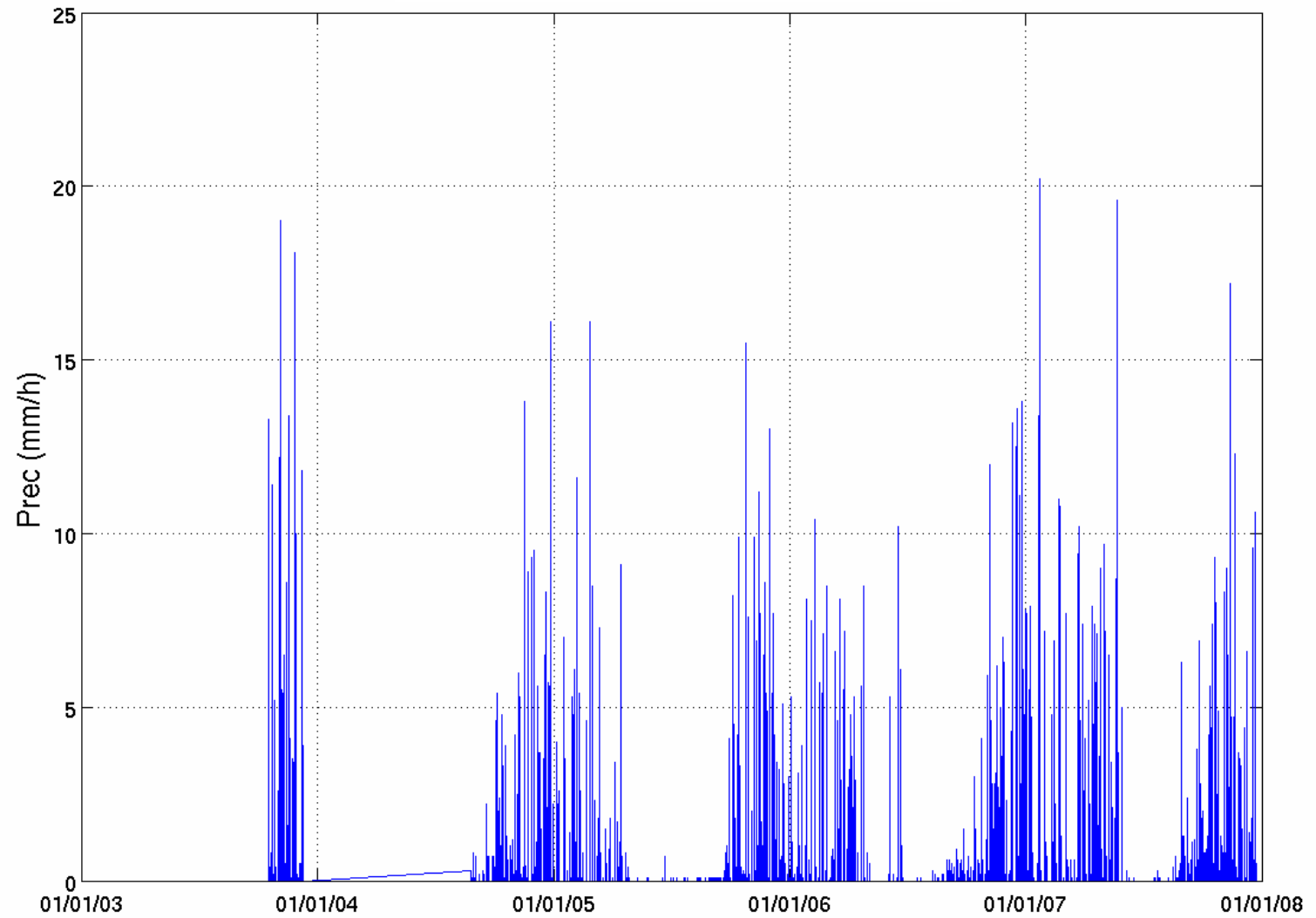
Meteorological station



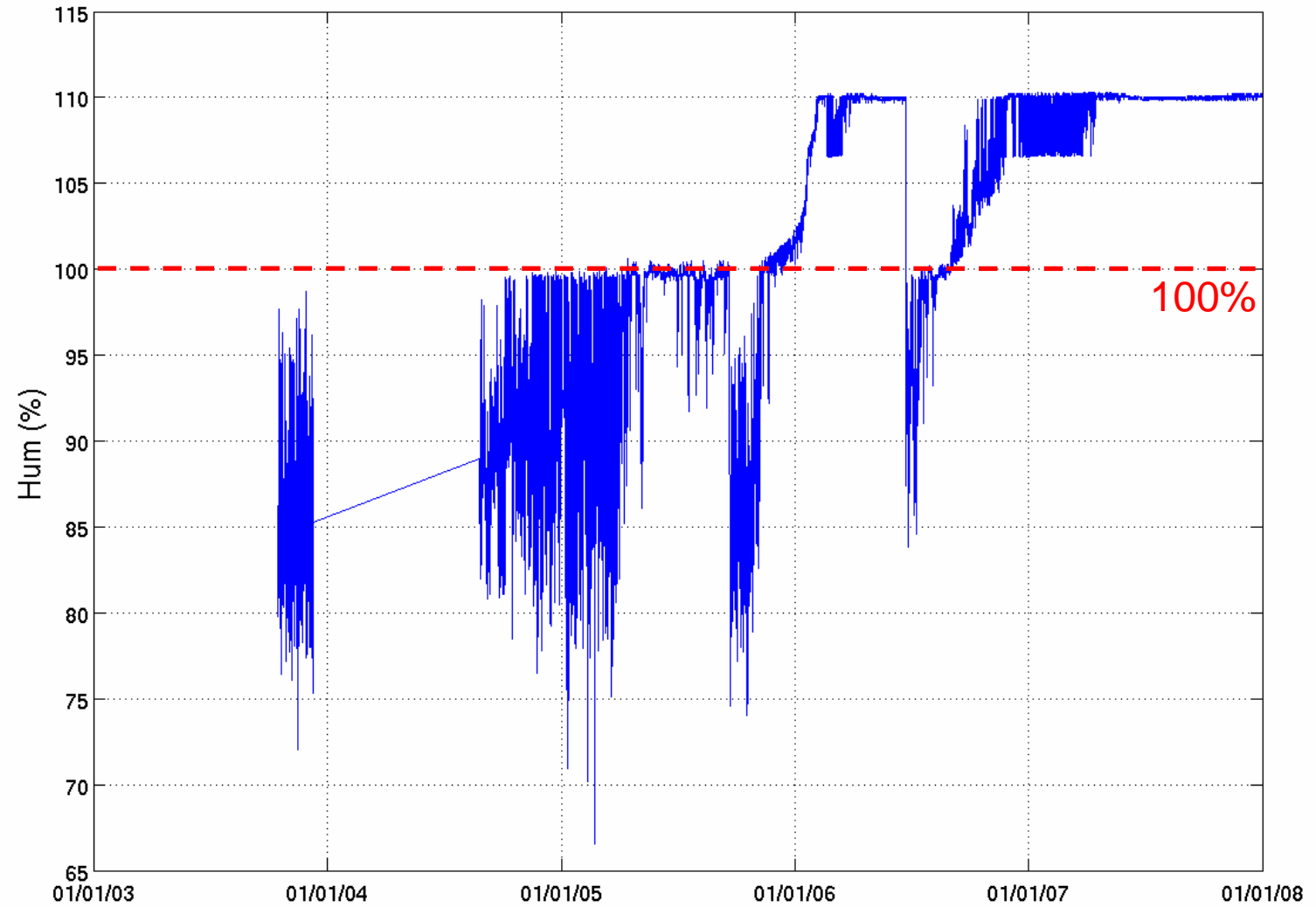
Atmospheric pressure



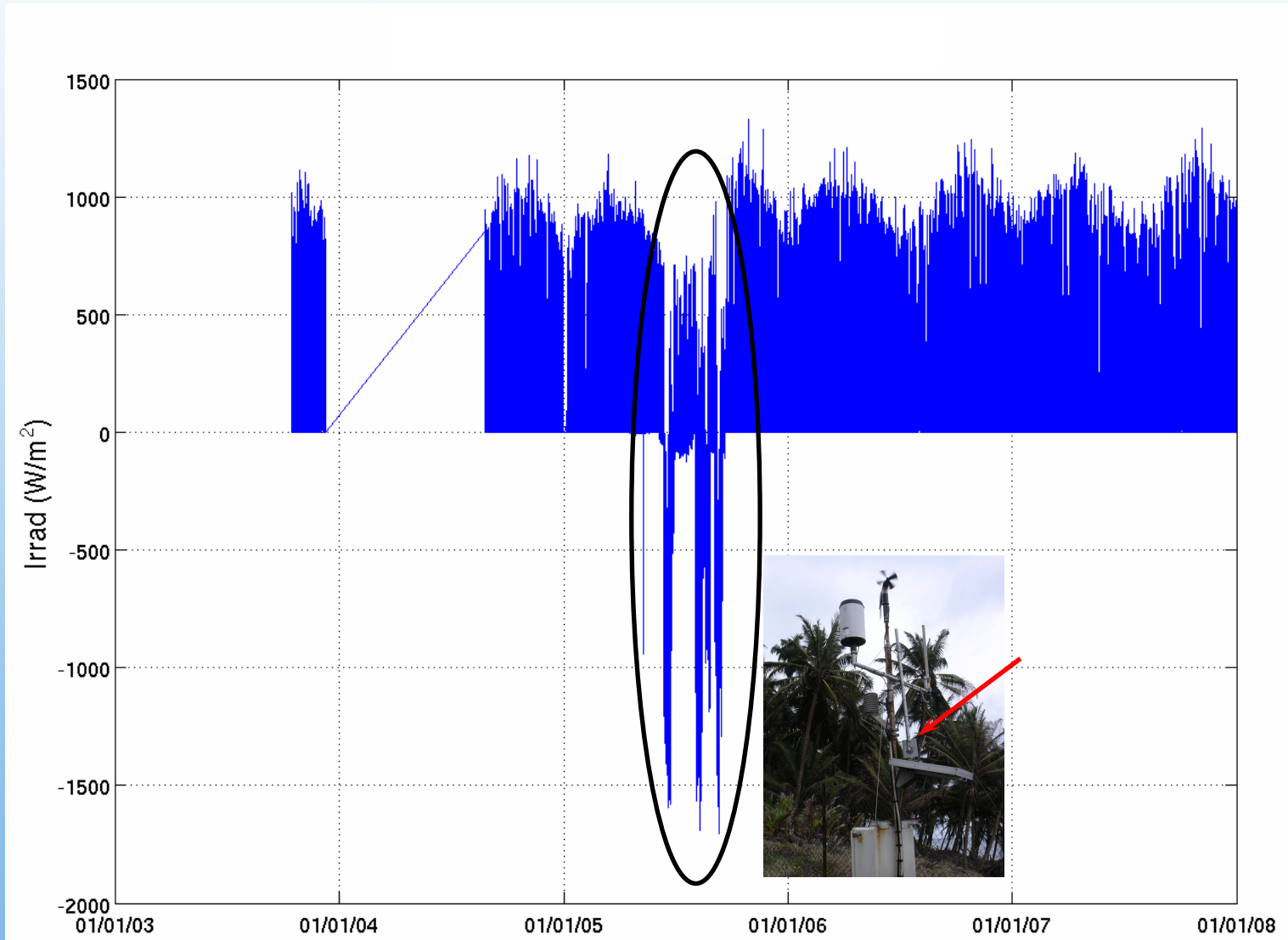
Precipitation



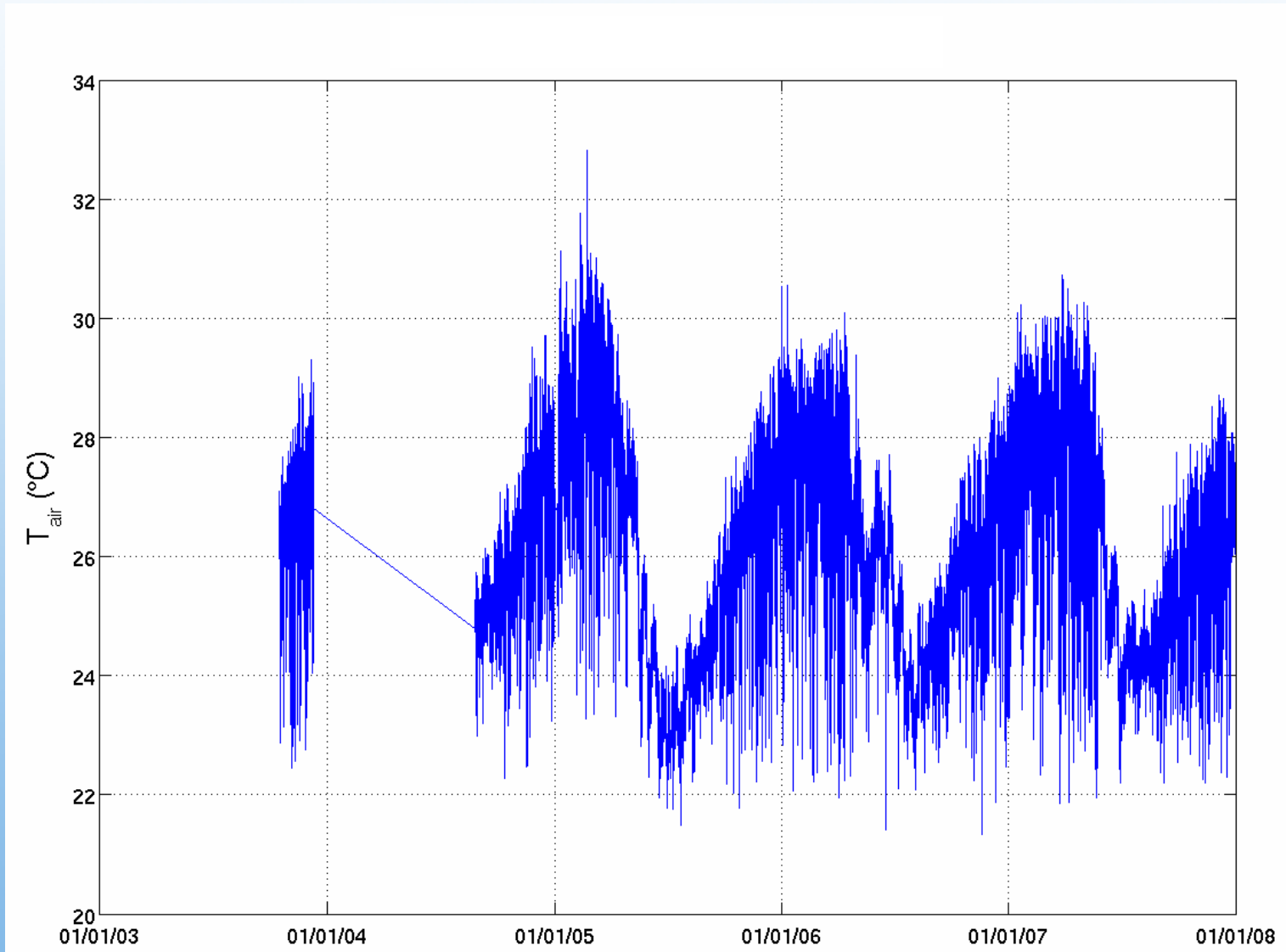
Air humidity



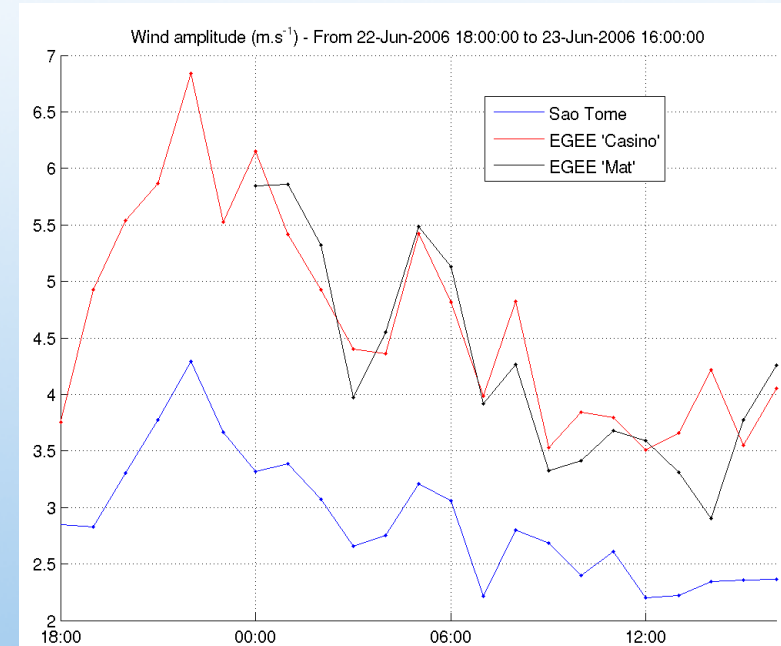
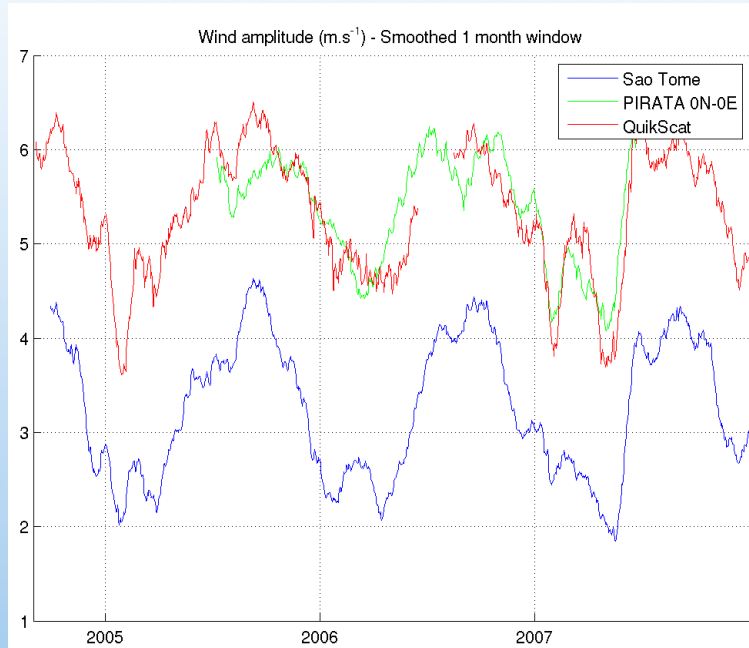
Solar irradiance



Air temperature



Wind amplitude



Coherent variability but smaller wind speeds at the station compared to PIRATA mooring, QuikScat satellite data and EGEE cruise.

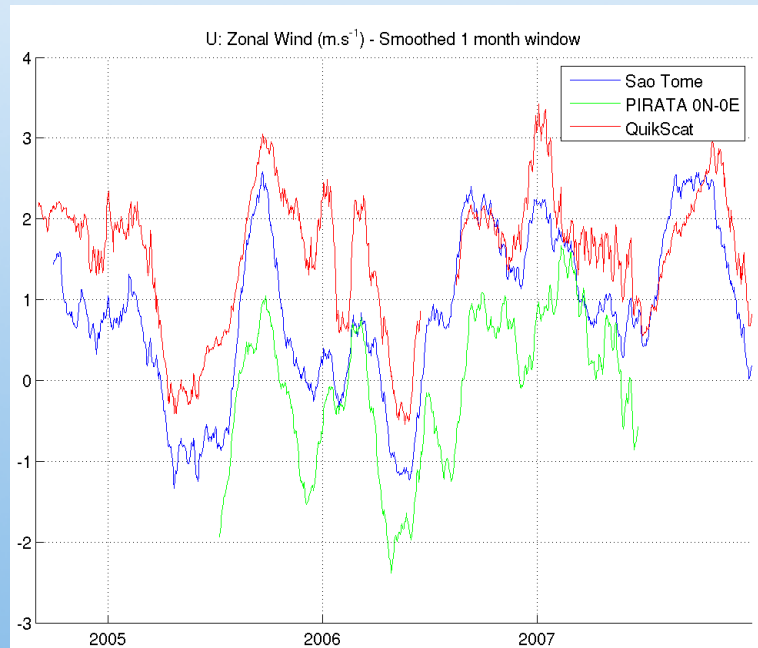


Why ? calibration, ... ?
(coefficient between station and independent observations is close to 1.6)

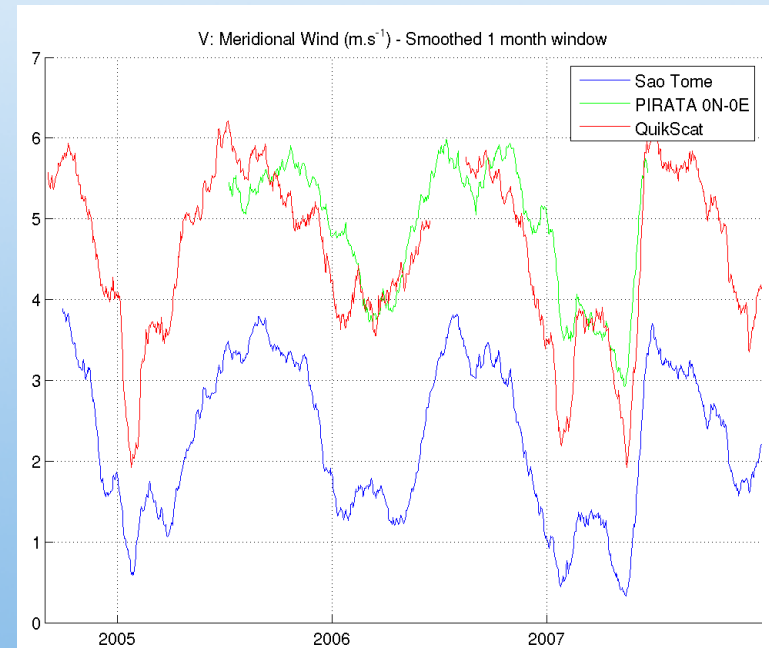
Meridional and zonal wind



Zonal (U)



Meridional (V)



Overview and next steps

São Tomé Meteorological station + tide gauge in the new MoU

Available **from end 2004** for meteorological data and
from end 2000 for tide gauge data

→ Problems to solve: wind intensity and air humidity



Soon available on the “new” PIRATA website !

Thank you for your attention

