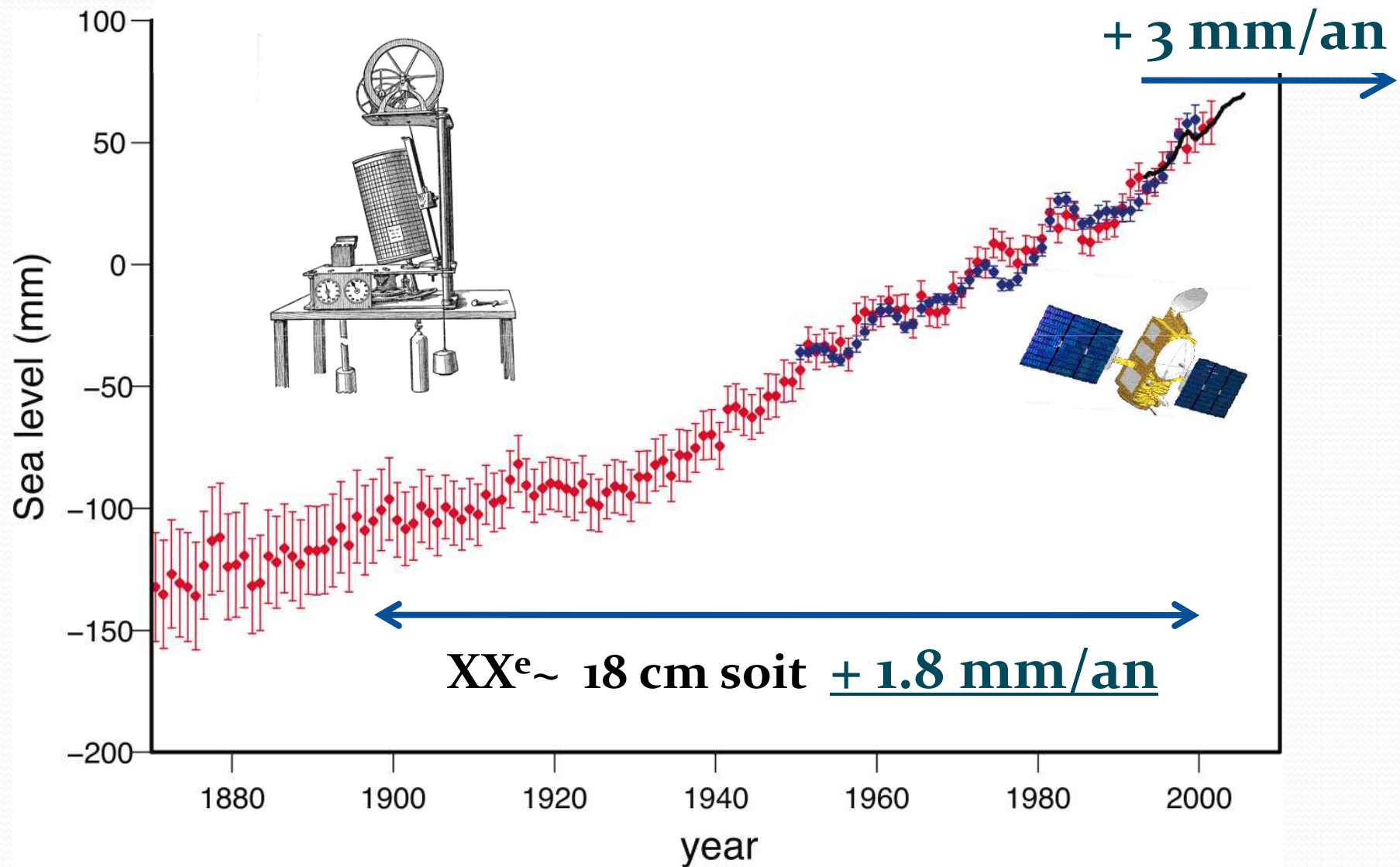


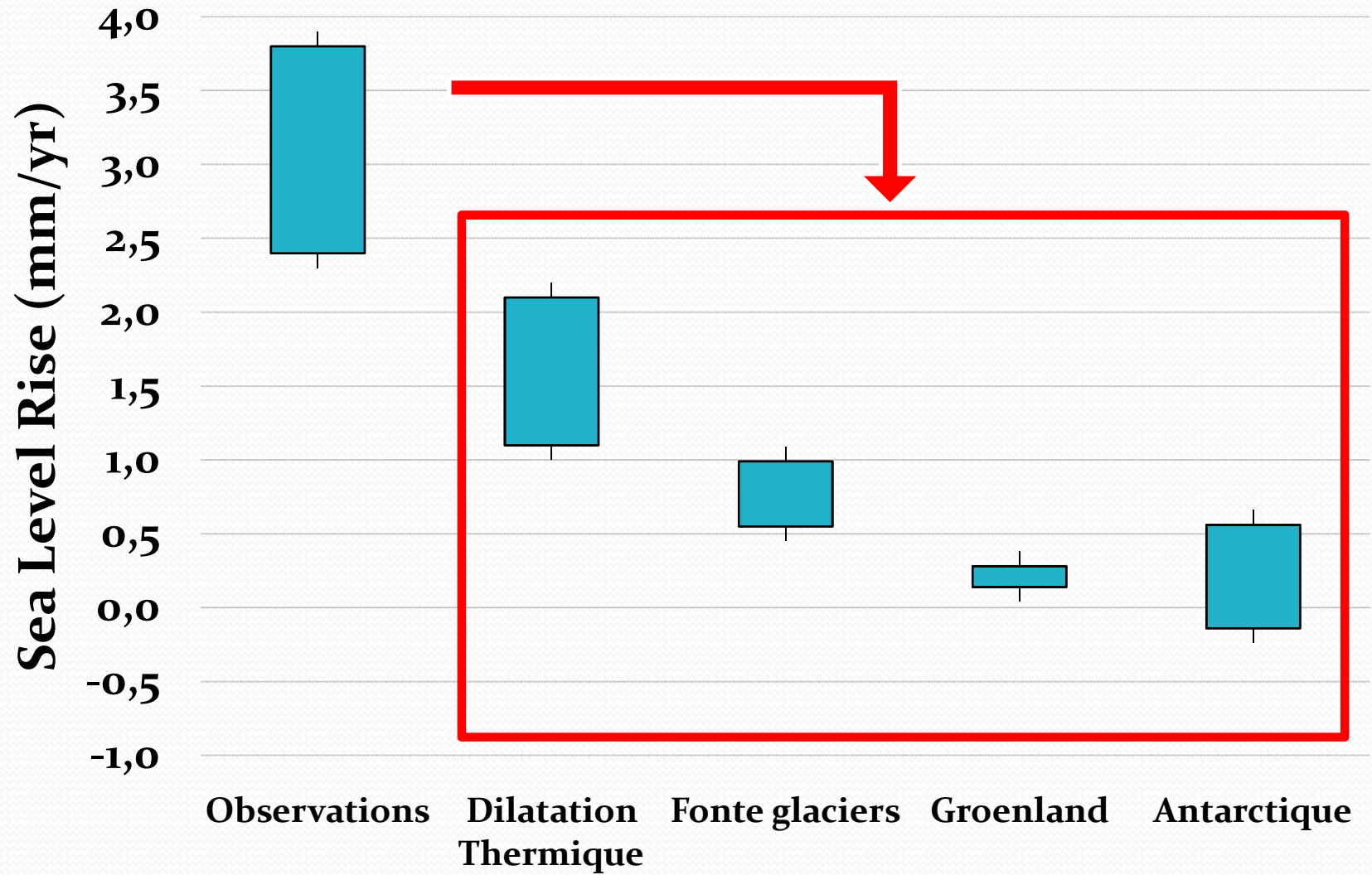
L'élévation du niveau des mers

- 1) Le constat
- 2) Les causes
- 3) Les prévisions à l'horizon 2100
- 4) Retour de mission ..

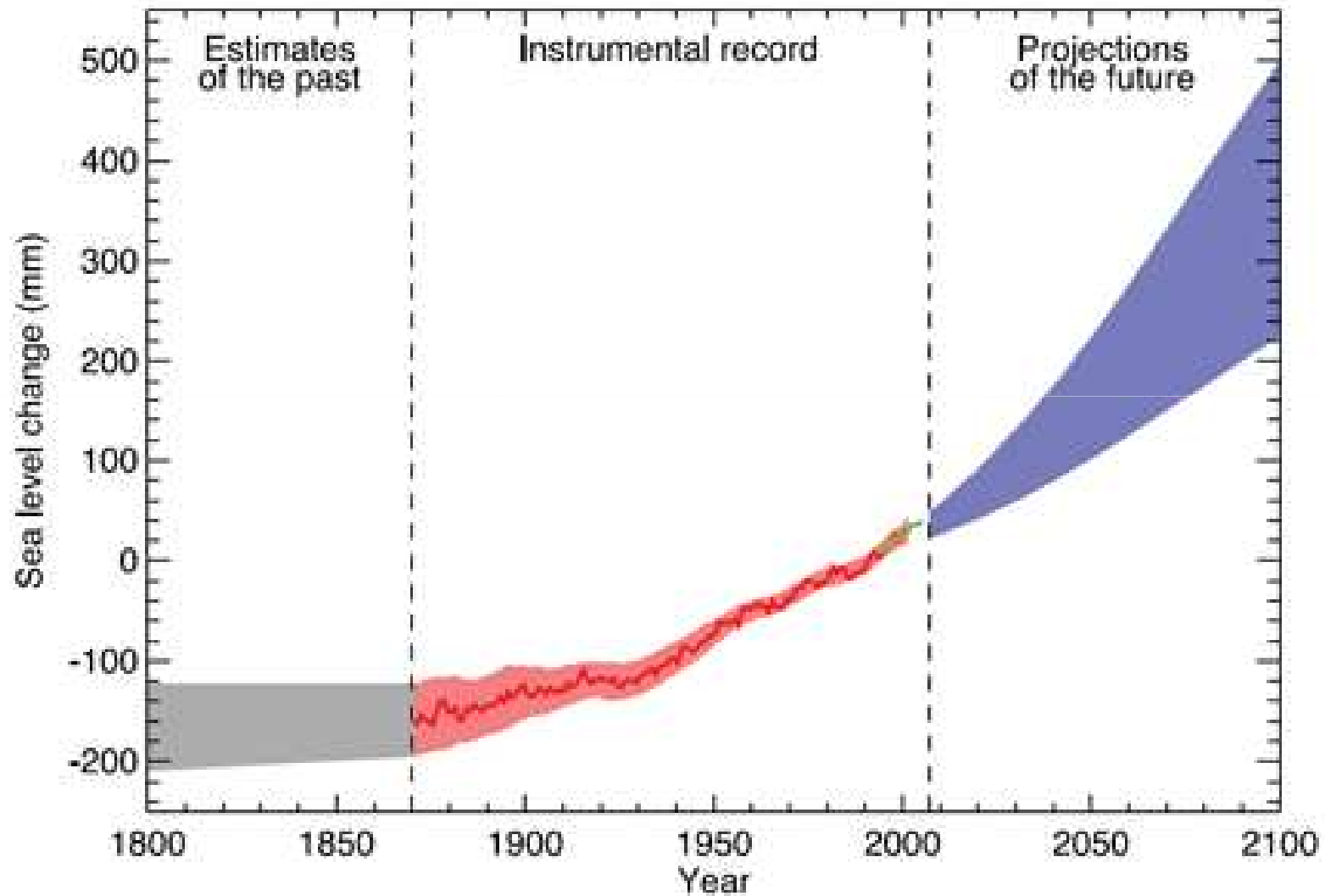
Le constat



Les causes



Les prévisions



Retour de mission NIVMER

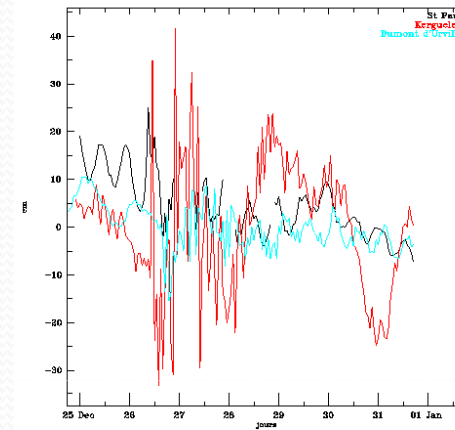
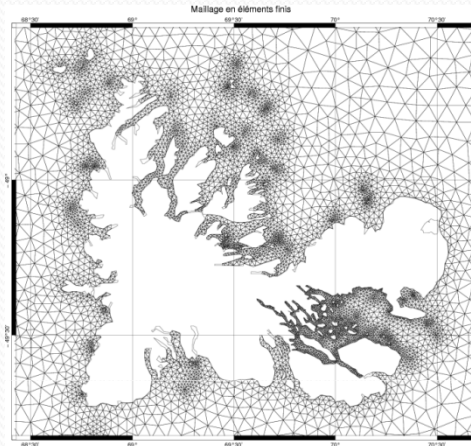
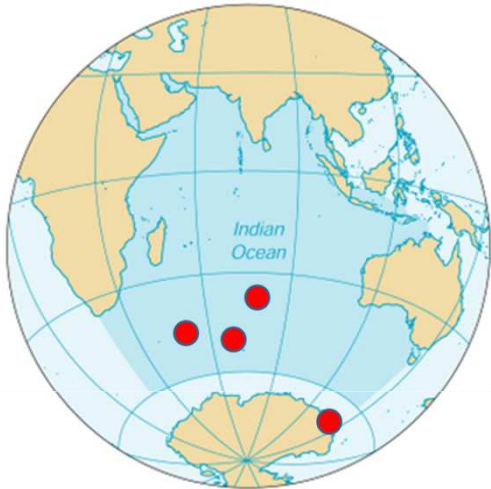


**Kerguelen / Crozet / Saint-Paul
Novembre 2007**

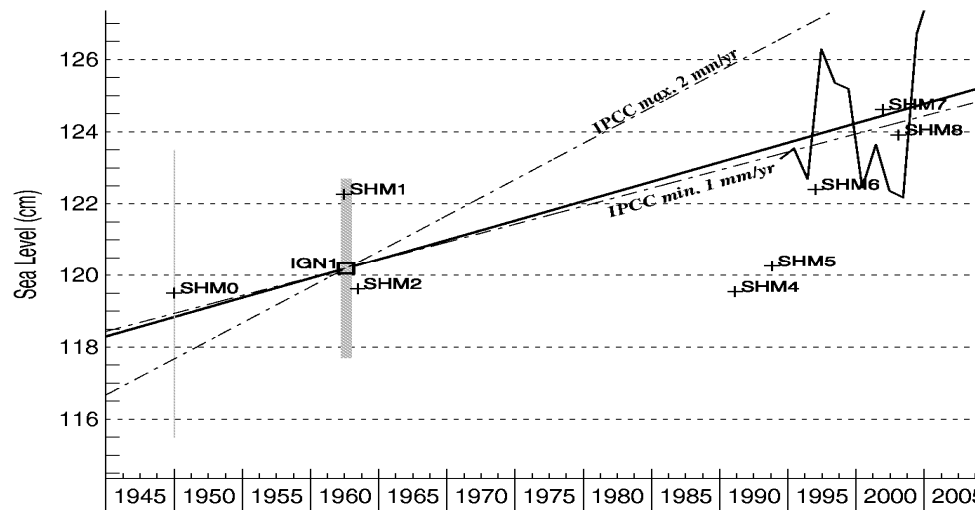
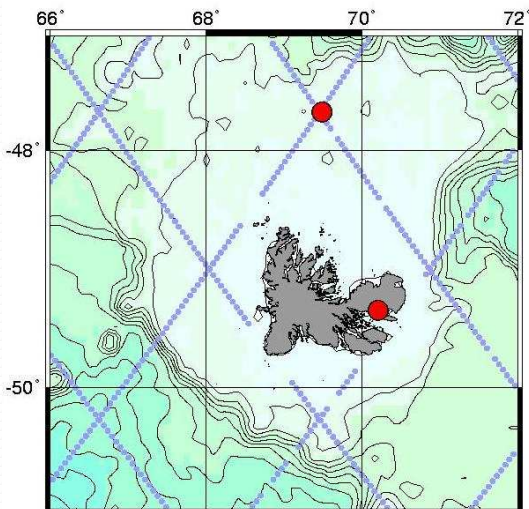
**Dumont d'Urville
Janvier 2008**



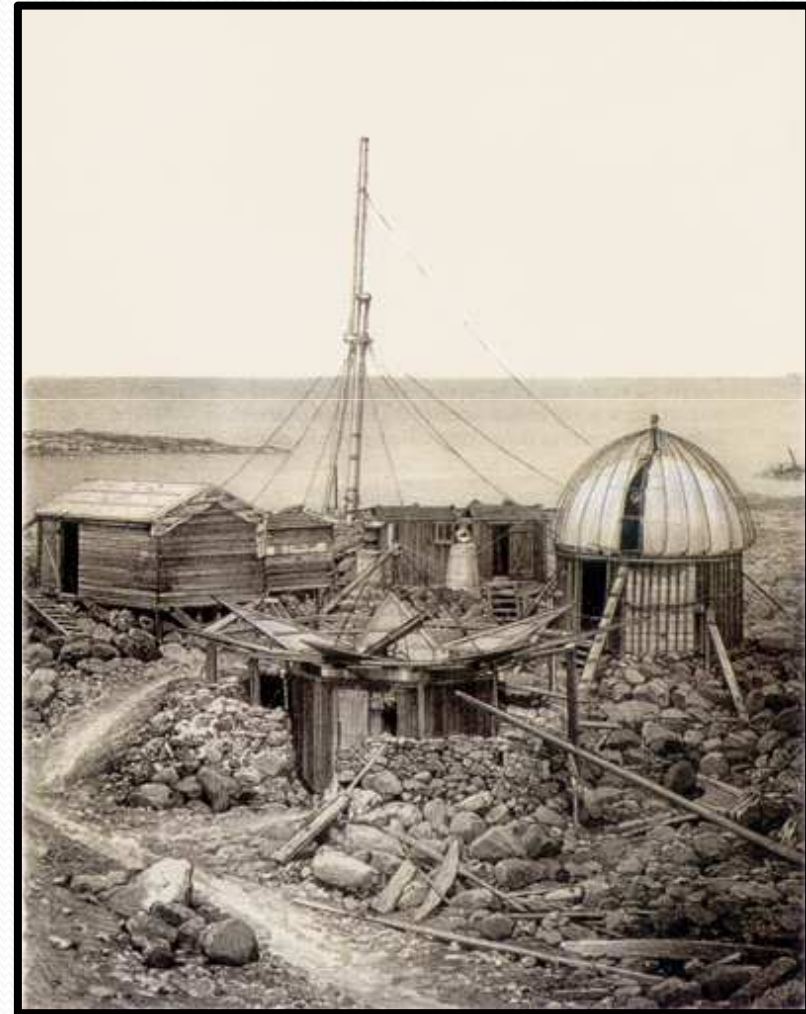
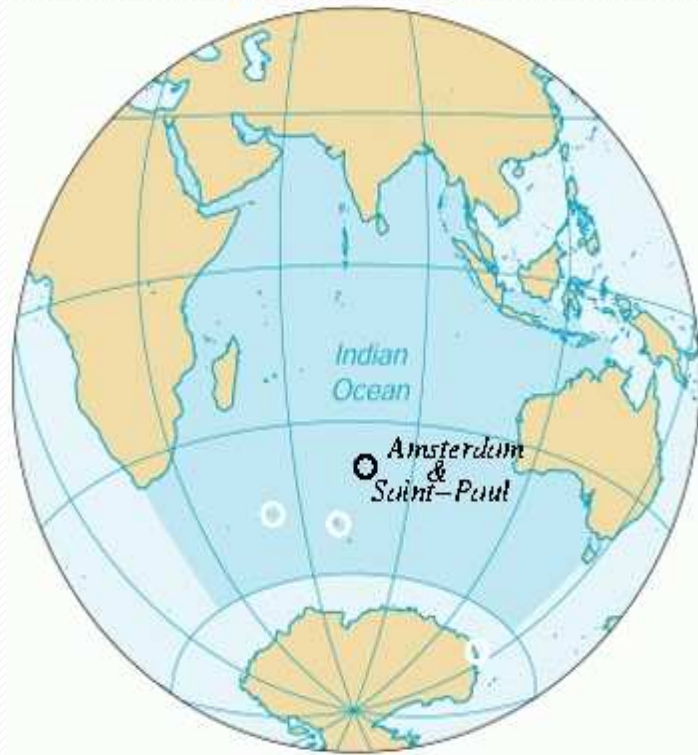
ROSAME(CNRS/INSU-IPEV) 1991-2008



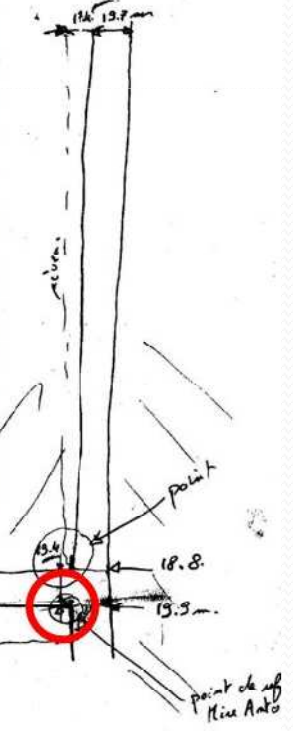
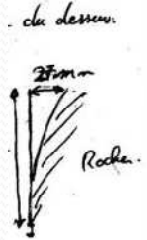
Detection de l'onde du tsunami du 28/12/2004



Saint-Paul (1874)



Saint-Paul (2008)



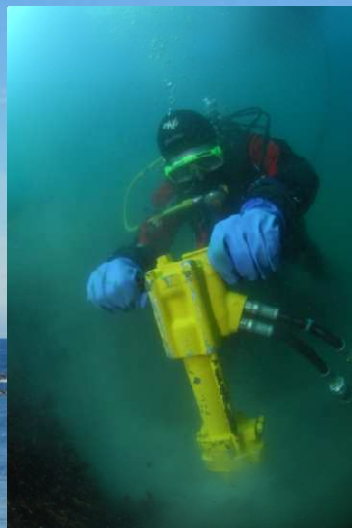
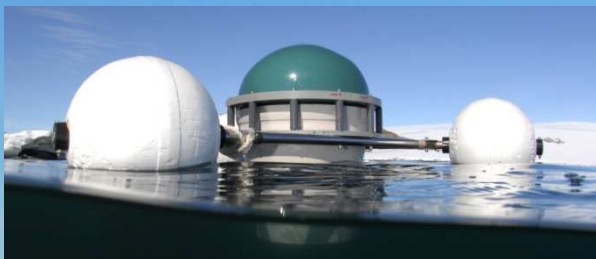
1.06
1/2 pour
les quatre côtés
pour "5.5"

la marque "seante" sur la gauche de 3.5 mm / 40 mm
et "d'apuce" sur la gauche de 27 mm / 40.

Commonwealth Bay (1912)



Commonwealth Bay (2008)



Merci ...

